

FILM MUSIC

CRIME

FM-CR1 United States 2001

**THE CAVEMAN'S VALENTINE –
CAVEMAN IN THE TRASH
CAVEMAN GETS OFF THE TRACK
CAVEMAN OUTSIDE THE CAVE ***

Soundtrack – Orchestral – Synthesizer – Instrumental

Comp: Terence BLANCHARD

Rts: Songs of Universal (BMI)

Scr. (Film): George Dawes Green (Based on his novel)

Perf: THE NORTHWEST SINFONIA

Terence **BLANCHARD** & Awadagin **PRATT**
(piano – Tks 5 & 21)

Dir. (Film): Kasi Lemmons, 2001

Prod. Co. (Film): Franchise Pictures, Epsilon Motion Production Co.,
Jersey Shore, Arroyo Pictures, Homeless Film Productions,
& Universal Pictures

Prod. (Disc): Terence Blanchard

Liner Notes: Terence Blanchard

Times: (Tk 5) 0:56; (Tk 17) 1:39; (Tk 21) 1:38

CD: THE CAVEMAN'S VALENTINE

Decca (Jersey) 440 013 586-2 (Tks 5, 17, & 21)

Notes: A homeless man, Romulus Ledbetter, lives in a cave in Inwood Park where he witness a murder and then tries, independently of the police, to track down the killer. Rom is a classically trained pianist and composer. During the investigation he is drawn back into the real world and begins composing for piano again, producing a haunting and occasionally delirious result.

Regarding the soundtrack – “The overall effect is still one most unsettling. This eerie musical atmosphere is found throughout the majority of tracks here. Filtered in are disturbing percussions and deep, dark synthesizers which become additional layers to this anxious music.” (Coleman 2009)

CAVEMAN IN THE TRASH (Track 5) – Up-beat funky percussions with short runs on piano.

CAVEMAN GETS OFF TRACK (Tk 17) – Stirring, menacing synth and a few rhythmic taps.

CAVEMAN OUTSIDE THE CAVE (Tk 21) – Liquid piano chords and tense synth resonances.

The cave scenes might have been shot at one of schist caves at Inwood Hill Park in northern Manhattan Island, New York City. However, judging from the film still (below left) showing Rom, played by Samuel L. Jackson, sitting in front of his cave, the cave does not correspond to the known cave entrances in the park; it's safe to say that the cave scenes were probably shot on a studio set where they would have full control over winter weather conditions.

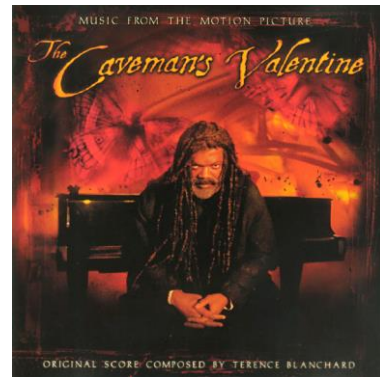
In 1890 one of these caves in the Inwood Hill Park was excavated by [Alexander Chenoweth](#) and important prehistoric Native American artifacts were found, which are now held at the Museum of the City of New York. (Thompson 2016) During the summer months, “the Lenape Indians lived in wigwams in **Inwood Hill Park**. They also found shelter in natural rock caves located on the east side of the park... [Today] that



T. BLANCHARD



A. PRATT



doesn't stop the occasional homeless person from squatting inside a cave but the park rangers make sure they don't stay long." (Anon. n.d.)



Ref: Awadagin Pratt, Bio, [Wikipedia](#)
Anon. n.d., Native American Caves, Inwood Hill Park, Manhattan, [tumblr](#)
Anon. 2012, Inwood Hill Park Caves, Sense & the City, [citylore-senseandthecity.blogspot.fr](#)
Anon. 2014, 17th Century Native American Caves Still Provide Shelter, [abritexploringnewyork](#)
The Caveman's Valentine, Film Credits, [imdb](#)
The Caveman's Valentine, Plot, [Wikipedia](#)
The Caveman's Valentine (Soundtrack), Editorial Review, Filmtracks, [filmtracks](#)
Clyne, Patricia Edwards 1980, *Caves for Kids*, Library Research Associates, Monroe, NY, p. 2-8
Coleman, Christopher 2009, The Caveman's Valentine , Piano in the Dark, [tracksounds](#)
Green, George Dawes 2001, *The Caveman's Valentine*, Warner Books, New York, p. 12, 237, 264-266
Inwood Hill Park Caves, Sense of the City, [citylore](#)
Terrence Blanchard, Bio, [Wikipedia](#)
Terrence Blanchard, The Caveman's Valentine (Soundtrack) CD, [Allmusic](#) (◀3 AUDIO SAMPLES)
Terrence Blanchard, The Caveman's Valentine (Soundtrack) CD, [Amazon](#) (◀3 AUDIO SAMPLES)
Terrence Blanchard, The Caveman's Valentine CD, [Discogs](#)
Thompson, Cole 2016, The Indian Caves of Inwood Hill Park, (with topo map), [myinwood](#)

FM-CR2 Italy 1993
**LA CORSA DELL'INNOCENTE –
LA GROTTA, LO ZAINO, LO SFREGIATO**

Soundtrack – Orchestral – Cave Pic Cover

Comp: Carlo SILIOTTO

Scr. (Film): Carlo Carlei & Gualtiero Rosella
(From story by Carlo Carlei)

Perf: BULGARIAN SYMPHONY ORCHESTRA

Cond: Carlo SILIOTTO

Dir. (Film): Carlo Carlei, 1966

Prod. Co. (Film): Canal +; Cristaldfilm; Fandango; RAI, etc.

Prod. Co. (Disc): CAM Jazz

Time: 2:58

1. **CD:** LA CORSO DELL'INNOCENTE

Cam COS 12 (Tk 6)

2. Reissue **CD:** LA CORSO DELL'INNOCENTE (2001)

Cam 4932882 (Tk 6)

Notes: This three-part cue, from the film "Flight of the Innocent" (US title), translates as "The Cave, the Knapsack, Scarface."

When his family is murdered by a rival clan of kidnappers, the boy Vito flees for his life. One Italian summary tells us – "*Disperato, trova il padre in fin di vita che gli ordina di scappare. Si imbatte così in una caverna e trova un zaino abbandonato scoprendo poi, che in quella stessa grotta c'è un ragazzino di nome Simone, morto di stenti. Inizia così la sua fuga verso la Toscana, da dove proveniva il bambino morto.*" (Anon. 2016)



C. SILIOTTO



[In desperation, the boy's father is dying and orders him to escape. So he stumbles onto a cave and finds an abandoned backpack, then discovers in that same cave a little boy named Simon, who died of starvation. Thus begins his escape to Tuscany, where the dead child came from.]

Another Summary tells a slightly different story – “There is a feud between two families of kidnapers and the boy Vito escapes from the slaughter of his family by... hiding under his bed. Before dying, his father advises him to warn his older brother who is hidden in a cave. When Vito arrives there, he finds his brother and a boy called Simone... dead. He finds a backpack with Simone's address in Rome and he decides to travel to Rome.” (Carvalho n.d.)

The filming was mostly done in the Cosenza province in the Calabria region and judging from the color still on the CD cover this was an artificial cave (see under Picture Covers – Real Caves – [Artificial Caves](#) – Italy).

The start of the 30-second audio sample had mysterious synth rumbling and streaming then pounding beats.

Ref: Anon. 2016, La corso dell'innocente, Plot (in Italian), [Wikipedia](#)

Carlo Siliotto, Bio, [Wikipedia](#)

Carvalho, Claudio n.d., La corso dell'innocente, Plot Summary, [imdb](#)

La corso dell'innocente (Flight of the Innocent), Film Credits, [imdb](#)

La corso dell'innocente CD, [Allmusic](#) (◀AUDIO SAMPLE)

La corso dell'innocente CD, [Amazon](#) (◀AUDIO SAMPLE)

FM-CR3 Germany 1995

HART AN DER GRENZE – DIE HÖHLE

Soundtrack – Television Series – New Age – Rock – Synthesizer

Comp: Thomas BLUG

Rts: Blue Cue Musikverlag (GEMA)

Perf: Thomas **BLUG** (synthesizer)

Prod Co: Saarländischer Rundfunk

Time: 2:07

CD: HART AN DER GRENZE

Semaphone 36213 (Tk 14)

Notes: English title is, “On the Edge” or “Close to the Limit,” and this music was written for a German television series in seven parts presented on the ARD Channel. Nothing further could be learned so it is not known really what this TV series was about or what happened during the scene for this cave cue, but it is assumed, judging simply by the series title, that it was related to crime in some way.

All the soundtrack is performed on synthesizer and the cue is primarily New Age with short interjections of rock. Ominous deep tones and intermittent bass beats are interrupted by a burst of rapid drumbeats and a few guitar chords. Then back to the dark synthesizer tones with higher strains. Some more rapid drumbeats, short guitar twangs, and an abrupt end.

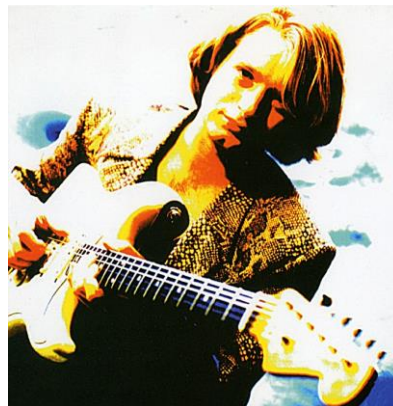
Thomas Blug is better known for his guitar work, but here he plays synth.

Ref: Hart an der Grenze CD, [Amazon](#)

Thomas Blug, Bio (in German), [Wikipedia](#) & (in English), [Wikipedia](#)

Thomas Blug, Website, Bio, [thomasblug.de](#)

T. BLUG



FM-CR4 United States 1996

LOST HIGHWAY – RED BATS WITH TEETH

Film Music – Jazz – Instrumental

Comp: Angelo BADALAMENTI

Rts: Analon Music/Bobkind Music (ASCAP)

Scr. (Film): David Lynch & Barry Gifford

Perf: Bob **SHEPPARD** (tenor sax)

A. BADALAMENTI



Ronald Brown & Henry Kranen (baritone saxes)
Ernest Hamilton (bass)
Ralph Penland (drums)

Dir. (Film): David Lynch, 1996

Prod. Co. (Film): October Films, CiBy 2000, Asymmetrical Productions, & Lost Highway Productions

Prod. (Disc): Trent Reznor

Prod. Co: Nothing/ Interscope Records; Los Angeles, CA

Time: 2:57

A. American Releases:

1. **CD:** LOST HIGHWAY

Nothing/ Interscope INTD-90090 (Tk 4)

2. Bootleg **LP:** LOST HIGHWAY

Simple Vinyl SVLP 0119

12" 33rpm (2XLPs) (Disc 1 – Sd 1 – Bd 4)

2. Reissue on Compilation **CD:** INDEPENDENT FILM CHANNEL:
IN YOUR EAR – VOL. 2 (2000)

Hybrid Recordings or Engine Group 68501 80026-2 (Tk 1)

B. Canadian **CD:** LOST HIGHWAY

Nothing/ Interscope INTSD-90090 (Tk 4)

C. European **CD:** LOST HIGHWAY

Nothing/ Interscope IND-90090 (Tk 4)

D. South Korean **CD:** LOST HIGHWAY (1996)

Nothing/ Interscope INTD-90090 (Tk 4)

E. Japanese **CD:** LOST HIGHWAY (1997)

Nothing/ Interscope MVCP-44 (Tk 4)

F. Australian **CD:** LOST HIGHWAY

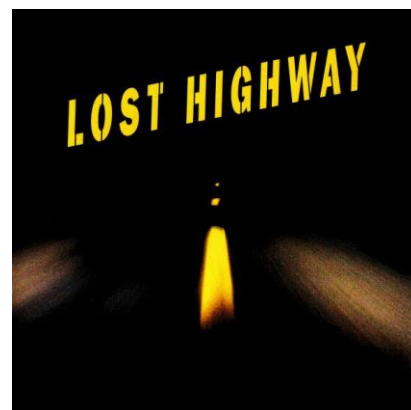
Nothing/ Interscope INTD-90090 (Tk 4)

G. Brazilian **CD:** A ESTRADA PERDITA

Nothing/ Interscope IND-90090 (Tk 4)



B. SHEPPARD



Notes: Fred is a man convicted of murdering his wife." He is arrested for her murder, tried, found guilty and sentenced to death. Shortly after arriving at death row, Fred is plagued by frequent headaches and strange visions of the Mystery Man, a burning cabin in the desert and a strange man driving down a dark highway." (Anon. 2016)

A menacing, funky drum and bass backing up the tenor lead. Then the baritones come growling in behind doing the bass line while the tenor takes off and reaches high screaming notes to finish crazy and alone, leaving us suspended.

The [YouTube](#) audio-video sample has the scene from the movie that uses this jazz cue. It shows an continuous shot looking out of the

windshield of a car at night as it goes down the black highway following two small tail lights, passing cars, seeing other isolated, random small bright circles, some white, some red; that come and go as the sax screams. The idea behind the title of this cue would seem to be those small white or red circles which can be read as bat's eyes coming at you. But where are the bat's teeth?

Ref: Anon. é016, Lost Highway (film), Plot, [Wikipedia](#)

Angelo Badalamenti, Bio, [Wikipedia](#)

Angelo Badalamenti, Red Bats with Teeth, (2:57), [YouTube](#) (◀COMPLETE AUDIO-VIDEO SAMPLE)

Bob Sheppard, Bio, [Wikipedia](#)

Independent Film Channel – In Your Ear CD, [CDUniverse](#) (◀AUDIO SAMPLE)

Lost Highway (Original Soundtrack) CD, [Allmusic](#) (◀AUDIO SAMPLE)

Lost Highway CD, [Discogs](#)

LA PIOVRA 8 – LO SCANDOLO CAVERNE

Television Series – Orchestral – Instrumental

Comp. & Arr: Paolo BUONVINO

Rts: Nuova Fonit Cetra

Scr. (Film): Mimmo Rafele & Alessandro Sermoneta
(From a story by Umberto Contarello, Andrea
Porporati, A. Sermoneta, & Sergio Silva)

Perf: (Studio Orchestra)

Cond: Paolo BUONVINO

Dir. (Film): Giacomo Battiato, 1997

Prod. Co. (Film): Rai Cinemafiction; Sveriges Television (SVT);
Tangram Film; & Zweites Deutsches Fernsehen (ZDF)

Prod. Co: Beat Records Co. Srl; Rome

Rec. Co: Music Village; Rome

Time: 2:03

CD: LA PIOVRA 8 & 9

Beat CDF 078 (Tk 12)

Notes: Score for a mafia series on Italian television, Rai. The title translates as “The Octopus – The Scandal.” Nothing is known about the content of this cavern scene.

Filming was done at various locations around Sicily and at Syracuse where there are the ancient limestone quarries, which were cut out using the pillar and stall process. There is the Cave of the Rope Makers and the famous Ear of Dionysius, an artificial cavity measuring 65m long and 23m high that has spectacular acoustics. It is not known if a natural cave was used for these cavern scenes.

A rapid, vibrant percussion pattern set down already in the previous cue returns distorted under menacing violins and woodwinds.

Ref: Paolo Buonvino, Bio, [Wikipedia](#)

Paolo Buonvino, La piovra 8 & 9 CD, [Discogs](#)

Paolo Buonvino, La piovra 8 & 9 CD, [muziekweb.nl](#) (◀AUDIO SAMPLE)

La piovra 8 – Lo scandolo, Film Credits, Internet Movie Database, [imdb](#)

La piovra 8 – Lo scandolo, Plot (in Italian), [Wikipedia](#)



P. BUONVINO



FM-CR6 Japan 1987 & United Kingdom 1998

THE SHATTERER – SICILIAN CAVES PALERMO CAVES

Film Music – Orchestral – Instrumental

Comp: Tot TAYLOR

Scr. (Film): Ernesto Gastaldi, Tonino Valerii, & Yasuo Tanami

Perf: Tot TAYLOR (organ)

Ann Morfee & Chris Tombling (violins)

Gus Goad (bass)

Tin-tin D'Aroso (timpani)

Paul Bultitude (drum)

Dir. (Film): Tonino Valerii, 1986

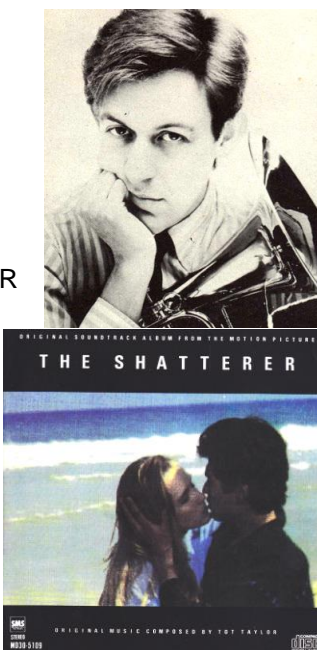
Prod. Co. (Film): Film elect; Toho Company;
Uanchi Corporation Srl; & Watanabe Productions

Prod. (Disc): Sound Marketing System Inc.; Japan
(No. 2 – CD) Tweed Records

Rec. Co (Disc): Livingston Studios; London

Time: (Nos. 1 & 2) 0:37

T. TAYLOR



(No. 3) (Tk 6) 2:43 & (Tk 11) 2:45

A. Japanese Releases:

1. Original **LP**: THE SHATTERER (1987)

SMS SM25-5432

12" 33rpm (Sd 2 – Bd 2)

2. Original **CD**: THE SHATTERER (1987)

SMS MD30-5109 (Tk 9)

B. British Enhanced Reissue **CD**: THE SHATTERER (1998)

Tweed TWEEDCD 6 (Tks 6 & 11)

Notes: The sound track music from this 1987 movie about a Japanese auto factory in Sicily where the company head is kidnapped by the mob. Nothing else is known about the plot or what happens in the caves. There are several caves scattered about Sicily and near Palermo is the Catholic shrine cave, Grotta di Santa Rosalia.

SICILIAN CAVES – The 2-minute sample had a ponderous, insistent beat with staccato chords then mournful strings leading to a long crescendo finish..

PALERMO CAVES – This 2-minute sample was identical to "Sicilian Caves."

This sound track album was recorded in London, but first released in Japan under the Japanese English title, "The Shatterer," with an abridged selection of only one of the cave-inspired cues, "Palermo Caves." Then in 1998 an enhanced soundtrack album was released in the United Kingdom, which included the full recordings of two cave-inspired cues, "Sicilian Caves" and "Palermo Caves." may have first been released on LP around the time of the movie release.

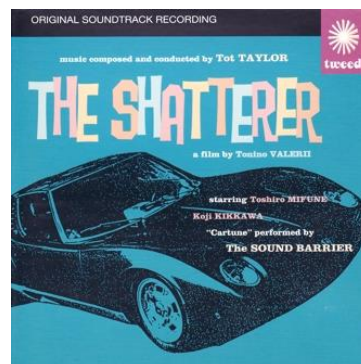
Ref: The Shatterer (Original Soundtrack) CD, amazon.co.uk (◀2 AUDIO SAMPLES)

The Shatterer (Original Soundtrack) CD, boomkat (◀2 NEAR-COMPLETE AUDIO SAMPLES)

The Shatterer LP & CDs, Discogs

The Sicilian Connection (The Shatterer), Film Credits, iudb

Tot Taylor, Bio, last.fm



FM-CR7 United States 2004

TRAFFIC (The Miniseries) –

THE CAVE

Television Series – Orchestral – Instrumental

Comp: Jeff RONA

Scr. (Film): Ron Hutchinson

Perf: Jeff RONA (ney)

Rubik Haratonian (duduk)

Jen Kuhn (cello)

Gregg Lehrman (guitar)

Peter Freeman, Scott Bross, & Louis Westfall (bass)

Mammad Mohsenzadeh (percussion)

Dir. (Film): Eric Bross & Stephen Hopkins, 2004

Prod. Co.(Film): Galway Bay Productions

Prod. (Disc):

Time: (Tk 6 - Total) 6:07

CD: TRAFFIC (The Miniseries)

Varèse Sarabande 302 066 544-2 (Tk 6)

Notes: "A three-part miniseries that offers a look into the world of trafficking, where drugs, weapons, and even people are traded all over the world. Here, the lives of three Seattle-based men become intertwined...until they're all in over their heads." (Anon. 2016) All that could be learned about the cave scene comes from a forum – "The most blatant and laughable technical blunder comes when the main character is caught in the cave full of heroin bundles with the other Afghans. He informs them that 'F-16s with guided bomb units' are inbound." (Visigothan 2001)



Jeff RONA



“Jeff Rona’s score for the USA Network production Traffic: The Miniseries mixes electronic, orchestral, and world music elements.” (Phares 2016)

On track 6, this cue is coupled with another – “The Bus Home/ The Cave.” Larson writes – “The cue creates a rich ambient texture using the ethnic musical styles, some Asian, some Latin American.

However only the first part of this dual cue, “The Bus Home,” has been given a partial [hearing](#) and the only instruments heard were string orchestra, percussion, and possibly a [ney](#) (Middle Eastern end-blown flute) or a [duduk](#) (a double reed woodwind flute). Assuming these same instruments carry through to the second part of the double cue the artists concerned have been listed above.

Filming was partially done in Kamloops, Ashcroft, and Cache Creek, with British Columbia standing in for Afghanistan. It is not known if a real cave or a set was used for this scene.

Ref: Anon. 2016, Traffic: The Miniseries, Film Credits, imdb

Jeff Rona, Bio, [Wikipedia](#)

Jeff Rona, Traffic CD, [Discogs](#)

Larson, Randall D. 2004, Traffic – The Miniseries, (No longer online), Cinescape

Phares, Heather 2016, Traffic: The Miniseries (Original TV Soundtrack) CD, [Allmusic](#)

Visigothan 2001, Traffic – The Miniseries (spoilers if anyone cares...), [arstechnica](#)

caveinspiredmusic.com