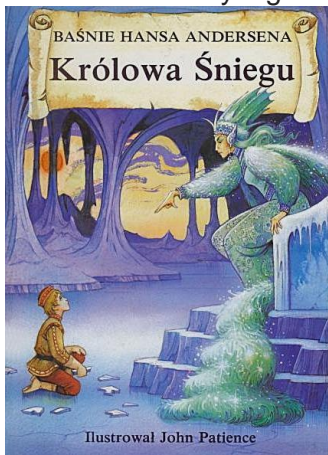


CONTEMPORARY ART MUSIC

PIANO LA GROTTE DE GLACE

MUSIC BACKGROUND:

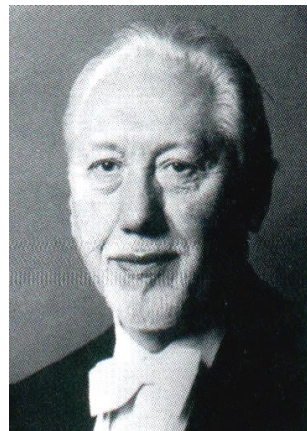
This is part 3 of a seven-part composition written by Milosz Magin in 1952 and entitled, "Images d'enfants." The composer tells us – "Avec les Images d'enfants, je voulais évoquer les souvenirs, les rêves et les visions de mon enfance ; ainsi j'étais ébloui par l'étrange lumière de la grotte de glace et les petits monstres hantaient souvent mes cauchemars." (Anon. n.d.) [With "Images of Children," I wanted to evoke the memories, dreams and visions of my childhood; I was so dazzled by the strange light of the ice cave and the little monsters often haunted my nightmares.]



Since the composer, Magin, was Polish perhaps the ice cave that inspired him was in the Tatra Mountains of southern Poland. There is also a very good possibility that he was inspired by the Snow Queen's ice cave palace from the celebrated children's tale *The Snow Queen* (Polish title: *Królowa Śniegu*) by Hans Christian Anderson. For more information about Anderson's *The Snow Queen* see under Cave Picture Covers – Imaginary Caves – Picture Discs.

"La grotte de glace recherche des sonorités transparentes, cristallines, luisantes à l'aigu, tandis que la basse chemine lentement, gravement et mystérieusement." (Anon. n.d.) ["The Ice Cave" searches for transparent sound, crystal clear, glistening in the acute, while the bass proceeds slowly, solemnly, and mysteriously.]

Ref: Anon. n.d., Catalogue des oeuvres de Milosz Magin, Piano, p. 2, [concours-milosz-magin](#)
Milosz Magin, Bio, [Wikipedia](#)



CT-PA-GG1 France 1970
IMAGES D'ENFANTS – Part III
LA GROTTE DE GLACE

Contemporary – Polka – Instrumental

Comp: Milosz MAGIN

Perf: **MILOSZ MAGIN** (piano)

Prod. Co: Disques Vega

Time: (?)

LP: COLLECTION MUSIQUE DU SIECLE



Vega 8.510

Notes: This performance by the composer was the first known performance of this work.

Milosz Magin settled in Paris in 1960, at the age of 31. "His brilliant career as an international soloist was interrupted in 1963 because of a serious car crash in which his left wrist was broken. With remarkable courage, he regained his technique and by 1968 was able to start recording the complete works of Chopin for Decca." (Anon. 2015)

Ref: Anon. 2015, Milosz Magin, Bio, [Wikipedia](#)

Anon. n.d., Catalogue des oeuvres de Milosz Magin, Piano, p. 2, [concours-milosz-magin](#)

CT-PA-GG2 United Kingdom 1975

IMAGES D'ENFANTS – Part III

LA GROTTÉ DE GLACE

Contemporary – Polka – Instrumental

Comp: Milosz MAGIN

Perf: MILOSZ MAGIN (piano)

Prod. Co: Decca Record Company Ltd.

Time: (?)

LP Series: COLLECTION ARISTOCRATE

Decca 7355

Notes: Another performance by the composer but no further information could be obtained. This could simply be a reissue of the 1970 Vega release.

Aristocrate is a French series of classical music originally released in the UK.

This is a series, not a label on its own. The actual label of the release is Decca.

Ref: Anon. n.d., Catalogue des oeuvres de Milosz Magin, Piano, p. 2, [concours-milosz-magin](#)

Aristocrate, French series of classical music, [Discogs](#)

Milosz Magin, Bio, [Wikipedia](#)



CT-PA-GG3 France 1983

IMAGES D'ENFANTS – Part III

LA GROTTÉ DE GLACE

Contemporary – Polka – Instrumental

Comp: Milosz MAGIN

Perf: (?) (piano)

Prod. Co: Disques Pianissime

Time: 1:44

LP: COLLECTION PIANO STARS

Pianissime MAG 2008

Notes: Another performance by an unknown pianist performing on a Bösendorfer piano. This could simply be a reissue of the 1970 Vega release by Milosz Magin.

The [YouTube](#) sample has the complete seven-part work, "Images d'enfants." This third part, "La Grotte de glace," can be heard starting at 2:33.

The piece had low chords mingled with frigid resounding notes at the high end of the keyboard. These high tinkling notes sound very much like ice stalactites when tapped. All tapered off to isolated chords and notes then ended with 12 seconds of silence.

Ref: Anon. n.d., Catalogue des oeuvres de Milosz Magin, Piano, p. 2, [concours-milosz-magin](#)

Milosz Magin, Images d'enfants, (9:05) [YouTube](#) (◀COMPLETE AUDIO SAMPLE)

CT-PA-GG4 Poland 2000

IMAGES D'ENFANTS – Part III

LA GROTTA DE GLACE

Contemporary – Polka – Instrumental

Comp: Milosz MAGIN

Perf: Magdalena **ADAMEK** (piano)

Prod. Co: Acte Préalable

Time: (?)

CD: MILOSZ MAGIN – PIANO WORKS 1

Acte Préalable AP0052 (Part 5 – Tk ?)

Notes: This was the first known performance released on CD.

No further information could be obtained.

Ref: Acte Préalable, Compact Discs, Catalogue 2014, p. 11, [acteprealable](#)

Anon. n.d., Catalogue des oeuvres de Milosz Magin, Piano, p. 2, [concours-milosz-magin](#)

Magdalena Adamek, Bio, Virginia Commonwealth University, Department of Music, [vcu.edu](#)

Milosz Magin, Bio, [Wikipedia](#)



CT-PA-GG5 Japan 2000

IMAGES D'ENFANTS – Part III

LA GROTTA DE GLACE

Contemporary – Polka – Instrumental

Comp: Milosz MAGIN

Perf: 江崎昌子 Masako **EZAKI** (piano)

Prod. Co: Exton

Time: 1:58

CD: マギン : ピアノ作品集 MILOSZ MAGIN – PIANO MUSIC

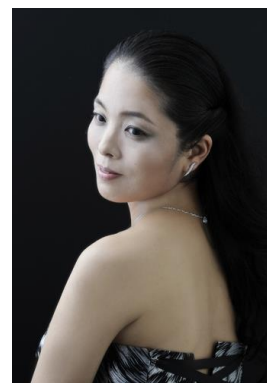
Exton OVCL-00029 (Tk 39)

Notes: No further information could be obtained.

Ref: Anon. n.d., Catalogue des oeuvres de Milosz Magin, Piano, p. 2, [concours-](#)

[milosz-magin](#)

Masako Ezaki, Milosz Magin – Piano Music, [Naxos.jp](#)



CT-PA-GG6 France 2001

IMAGES D'ENFANTS – Part III

LA GROTTA DE GLACE

Contemporary – Polka – Instrumental

Comp: Milosz MAGIN

Perf: Philippe **DEVAUX** (piano)

Prod. Co: Spidam; Passavant

Rec. Co: Studio Acoustique de Passavant

Rec. Date: July 2001

Liner Notes: Philippe Devaux (English trans.: Helen Jones)

Time: 1:47

CD: L'OEUVRE POUR PIANO – VOL. 1

Passavant Collection PAS 1002 (Tk 17)

Notes: This performance was not heard.

Ref: Anon. n.d., Catalogue des oeuvres de Milosz Magin, Piano, p. 2, [concours-milosz-magin](#)

Philippe Devaux, Milosz Magin – L'œuvre pour piano – Vol. 1 CD, [philippedevaux](#)

Philippe Devaux, Website, Bio (in French), [philippedevaux](#)



CT-PA-GG7 Italy 2005

IMAGES D'ENFANTS – Part III
LA GROTTTE DE GLACE

Contemporary – Polka – Instrumental

Comp: Milosz MAGIN

Perf: Marialaura **CIRILLO** (piano)

Prod. Co: Ares

Time: (?)

CD: MILOSZ MAGIN

Ares ACD 086

Notes: The [Deezer](#) sample was from the 2012 Marialaura Cirillo CD release on the Heristal Entertainment label of Milosz Magin – Piano Works – Vol. 1. This CD might have been a reissue of the Ares CD.

This sample had frigid chords mounting and resounding at the high end of the keyboard.

No further information could be obtained.

Ref: Anon. n.d., Catalogue des oeuvres de Milosz Magin, Piano, p. 2, [concours-milosz-magin](#)

Marialaura Cirillo, Milosz Magin, La Grotte de glace, [Deezer](#) (◀ **AUDIO SAMPLE**)

Marialaura Cirillo, Milosz Magin – Piano Works – Vol. 1, [Amazon](#)

caveinspiredmusic.com